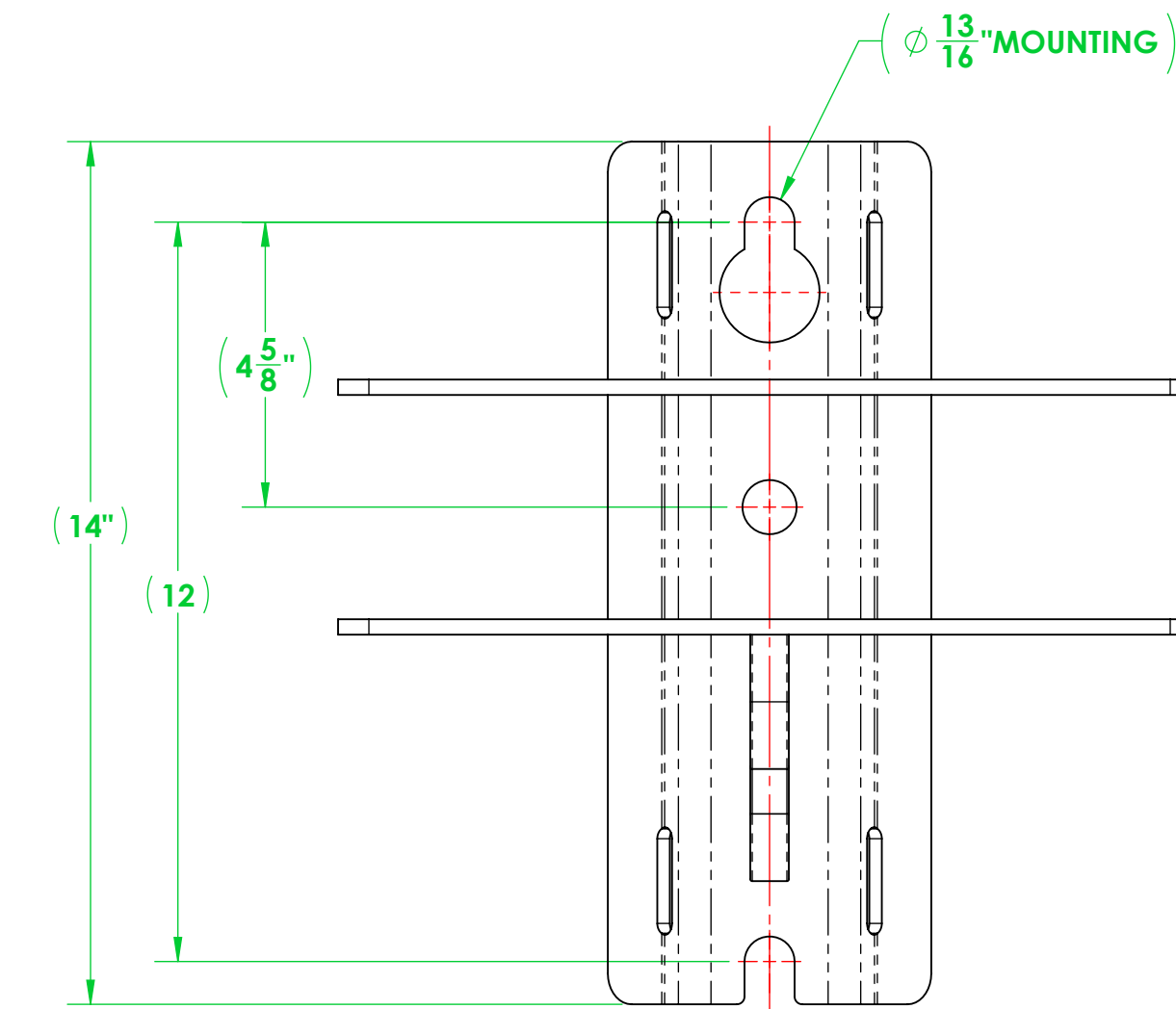
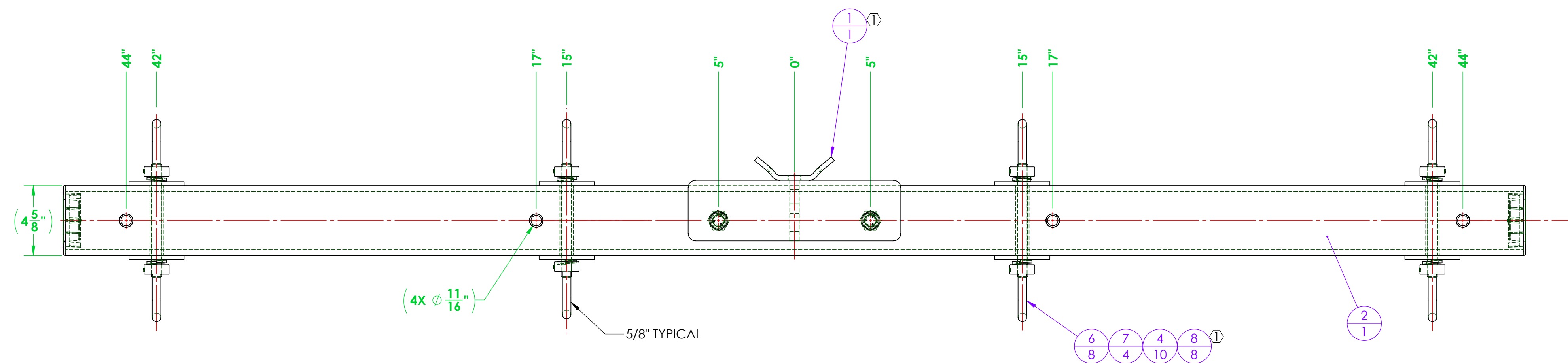
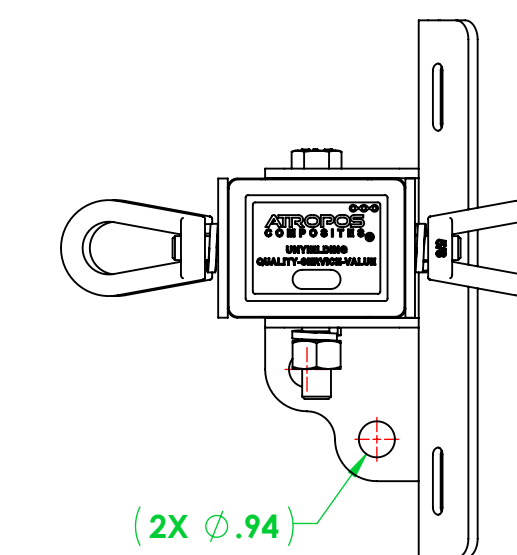
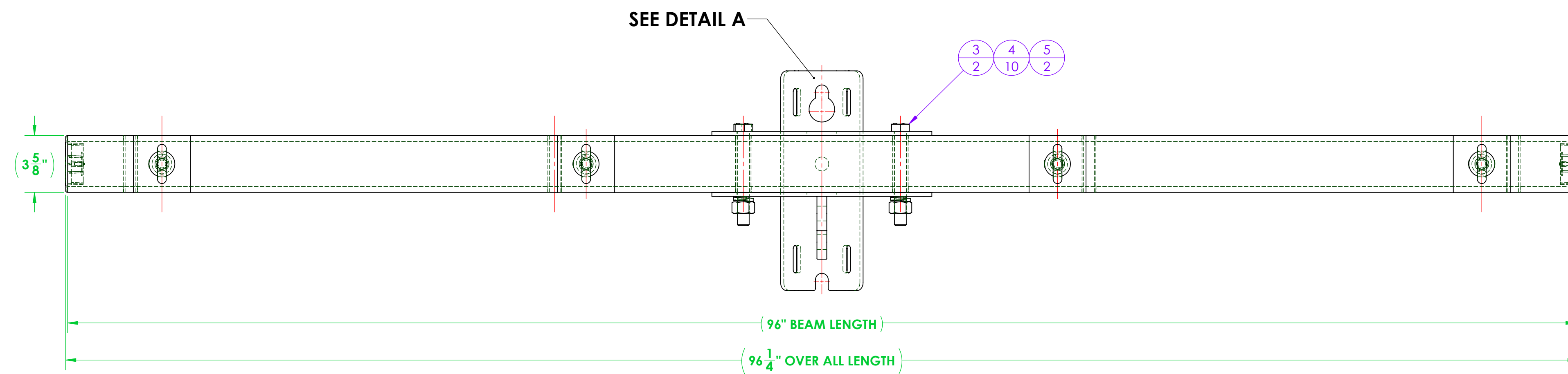


REVISIONS			
REV.	DESCRIPTION	DATE	APPROVED
1	MOUNTING BRACKET WAS FABRICATED NOW PURCHASED. PLATE WASHERS WERE FABRICATED NOW PURCHASED.	4/22/2026	F. BRYANT




DETAIL A



ITEM NO.	PART NUMBER	DESCRIPTION	QTY.
① 1	A700-0044	CROSSARM MOUNTING BRACKET, DEADEND, 3400 SERIES	1
2	3403A096-D312-4R08 CA	ASSEMBLY, 3402 DEADEND CROSSARM, 8'	1
3	A616-0020-02	BOLT, HEX, 3/4"-10 X 6.00" LONG, HOT DIPPED GALVANIZED STEEL, 1-1/8" DRIVE	2
4	A616-0042-01	LOCK WASHER, FOR 3/4" SCREW, 0.766" ID, 1.265" OD, 0.188" THICK, HOT-DIPPED GALVANIZED STEEL	10
5	A616-0019-02	EXTREME STRENGTH NUT, HEX, 3/4"-10, 2H, HOT-DIPPED GALVANIZED	2
6	A616-0017-02	EYENUT, 5/8"-11, GALVANIZED STEEL	8
7	A711-0044	ALL-THREAD, 5/8"-11 X 7.50" LONG, GALV. STEEL	4
① 8	A700-0049	WASHER, SQUARE, 3.625" X 3.625" X 0.25 THICK WITH 0.66 THRU HOLE	8

GENERAL NOTES		UNLESS OTHERWISE SPECIFIED		NAME	DATE
DIMENSIONS ARE IN INCHES		STANDARD TOLERANCES		DRAWN	F. BRYANT
FRACTIONAL: ±1/32		CHECKED		ENG APPR.	10/16/2025
ANGULAR: ±0.5° BEND: ±2°		MFG APPR.			
TWO PLACE DECIMAL: ±0.03		Q.A.			
THREE PLACE DECIMAL: ±0.005					
INTERPRET GEOMETRIC TOLERANCING PER: ANSI Y14.5					
MATERIAL		PROPRIETARY AND CONFIDENTIAL			
FINISH		THE INFORMATION CONTAINED IN THIS DRAWING IS THE SOLE PROPERTY OF VECTURIO. ANY REPRODUCTION IN PART OR AS A WHOLE WITHOUT THE WRITTEN PERMISSION OF VECTURIO IS PROHIBITED.			
DO NOT SCALE DRAWING		SCALE: 1:8		WEIGHT: 91.01	SHEET 1 OF 1



12208 MISSOURI BOTTOM ROAD, HAZELWOOD, MO 63042
PHONE: 314.714.4001 FAX: 314.895.1943
SALES@LABYRINTH-TECH.COM

TITLE:
ASSEMBLY, RUS, 3403 DEADEND CROSSARM WITH GAIN, 8'

SIZE DWG. NO. REV
D3403A096-D312-4R08 1